

MATH COREQUISITES AT WALLA WALLA COMMUNITY COLLEGE (WWCC)

Who? Students requiring precollege-level math support to complete their Quantitative Skills Requirement.

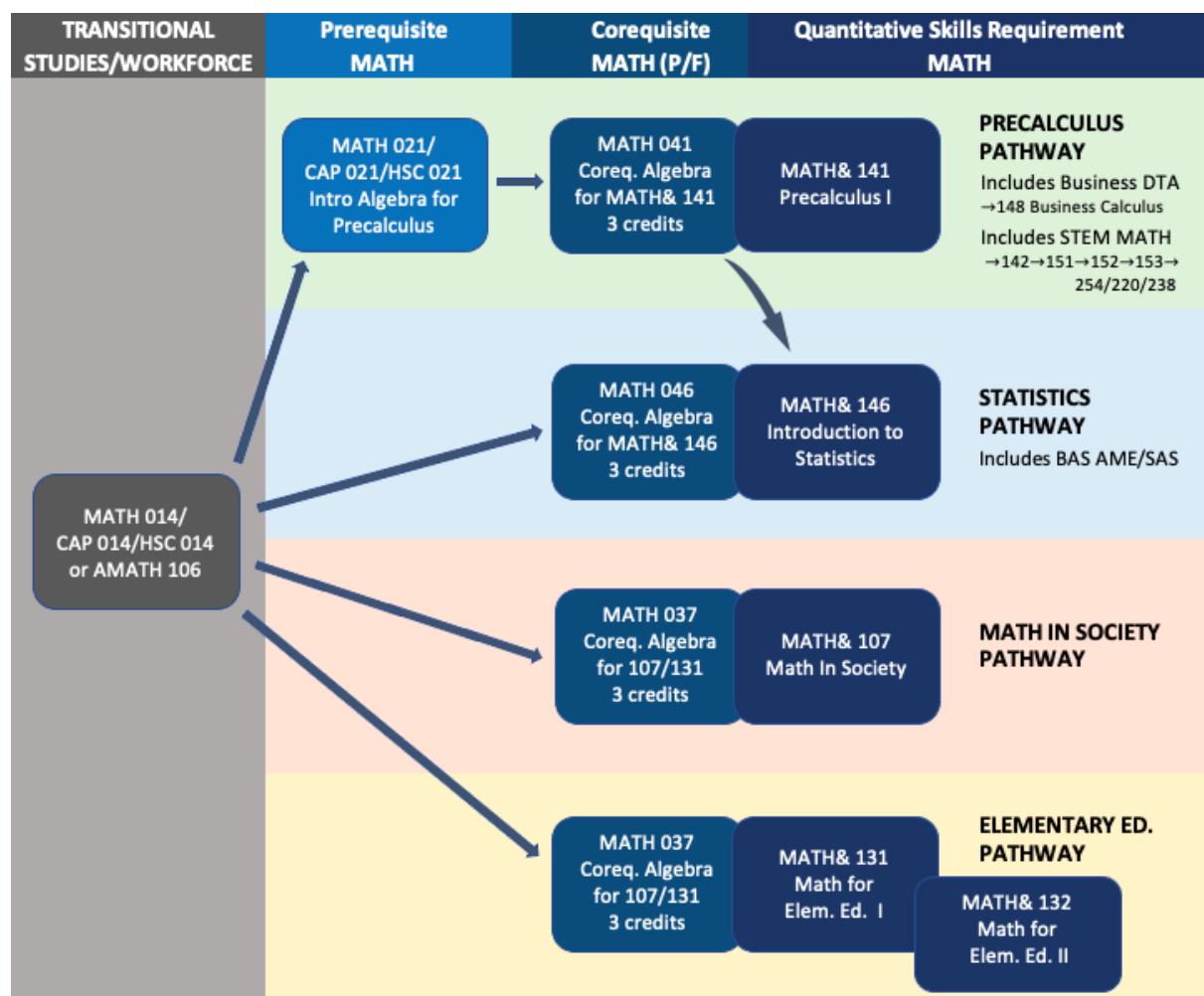
What? Evidence-based corequisite model with documented success across demographics. Sample change: What was three quarters and 15 credits (75, 78, 146) will now be one quarter and 8 credits (146 + 046).

When? Full-scale implementation of corequisite model in place FALL 2021. SPRING 2021 is the last quarter MATH 71, 75, 79, and 80 will be offered. SUMMER 2021 is the last quarter MATH 78 will be offered.

Where? Walla Walla and Clarkston campuses of WWCC. Correction campuses CRCC and WSP may adopt corequisite model at later date.

Why? Increase percentage of degree/certificate-seeking students completing college-level math within one year from 32% (2015-2017 three-year average at WWCC) to at least 64% (based on data from other schools with corequisites) and eliminate equity gaps for low-income students and students of color.

How? College Spark grant and a whole lot of work from folks across the college. Moving forward, these folks include you as you work within this new structure.



- Students to complete QSR MATH within one year of enrollment at WWCC.
- Corequisite support course must be taken concurrently with college-level course; college-level course may be taken with or without support course, depending on placement.
- Guided self-placement tool replacing current placement process Spring 2021.
- Crosswalks between new pathways: 037→ 146, 046→107/131 and 041→107/131/146.
- Students moving into precalculus pathway from other pathways need new placement.
- No additional textbook costs for 3-credit corequisite support course.

- Students currently in the precollege math sequence will transition as follows:
 - Completion of MATH 71 or placement into MATH 75 qualifies student to take MATH 021, MATH 037 with MATH& 107, MATH 037 with MATH& 131 or MATH 046 with MATH& 146.
 - Completion of MATH 75 or placement into MATH 78 or MATH 79 qualifies student to take MATH 037 with MATH& 107, MATH 037 with MATH& 131, MATH 046 with MATH& 146, or MATH 041 with MATH& 141.
 - Completion of MATH 78 or placement into MATH 80 qualifies student to take MATH 041 with MATH& 141, MATH& 107, MATH& 131, or MATH& 146.
 - Completion of MATH 79 or MATH 80 or placement into MATH& 141 qualifies a student to take MATH& 107, MATH& 131, MATH& 141, or MATH& 146.
 - Transition summarized in tabular form:

Previous Placement	Or Course Completed	New Placement Precalculus Pathway	New Placement Other Pathways
71	NA	021 (Consider 014.)	037/107, 037/131, 046/146 (Consider 014.)
75	71	021	037/107, 037/131, 046/146
78/79	75	041/141	037/107, 037/131, 046/146
80	78	041/141	107, 131, 146
NA	79/80	141	107, 131, 146